



सम्बृद्धिको लागि वन कार्यक्रम

प्रदेश आयोजना समन्वय समितिको बैठक
(Province Project Co-ordination Committee Meeting)
लुम्बिनी प्रदेश

मिति: २०७८।९।२५

स्थान: सिद्धार्थ कटेज, बुटवल

सहयोग

रेड कार्यान्वयन केन्द्र
बबरमहल, काठमाण्डौं

डेभेलपमेण्ट भिजन नेपाल, काठमाण्डौं

आयोजक

वन वातावरण तथा भू संरक्षण मन्त्रालय
लुम्बिनी प्रदेश

Forestry for Prosperity Project (सम्बृद्धिका लागि वन कार्यक्रम) :

Components, Municipality and Status of Project Management

Yajnamurti Khanal
Under-Secretary, REDD IC

Forest Investment Program -jg nufgL sfo{qmd_

- ljZj j}+sn] ;g\ @))(b]lv z'?
- ljslzn /fi6«x?n] jg ljgfz / jgsf] IfoLs/0f Go'gLs/0f / jgsf] lbuf] Joj:yfkg dfk{mt sfj{g Go'gLs/0f k|of;x?df ;xof]u ug]{ .
- ljslzn /fi6«x?sf] jg ;DjlGwt gLltut k|s[ofdf kl/jt{gsf/L ?kfGt/0fdf ;xhLs/0f ug]{ .
- o'PgPkm;L;L /]8 Kn; ;Gbe{df cg'ej / k[i7kf]if0f ug]{ .

Forests for Prosperity Project (FFPP)- ;d[l4sf nflu jg kl/of]hgf

- ;g\ @)!& df g]kfnn] "jg nufgL sfo{qmd" cGt/ut "jg nufgL of]hgf" th{'df u/]sf] .
- ;g\ @)! (df g]kfnn] "jg nufgL sfo{qmd" cGt/ut ";d[l4sf nflu jg kl/of]hgf" th{'df u/]sf] .
- k|b]z g+ @ / n'lDjgL k|b]zdf jgsf] lbuf] Joj:yfkgdf ;xof]u tyf jg If]qaf6 nfe clej[l4 u/L xl/t u[x UofF; pT;h{g Go'gLs/0fdf of]ubfg ug]{ .
- jgsf] If]qkmn tyf u'0f:t/df clej[l4 u/L ;du|df jgsf] pTkfbsTjdf ;xof]u ug]{ .



समृद्धिका लागि वन परियोजनाका (Forests for Prosperity Project)

- वनको दिगो व्यवस्थापन र उद्यम विकासका लागि निति तथा क्षमता विकास सहयोग
- समुदायमा आधारित वनको दिगो व्यवस्थापन तथा वृक्षारोपण
- वन उद्यम विकास तथा सुधार
- परियोजना व्यवस्थापन, अनगमन तथा ज्ञान विकास

नेपाल सरकार र विश्व बैंक विच सन् २०२१ मार्च १९ मा २ करोड ४० लाख अमेरीकी डलरको परियोजनाको लागि हस्ताक्षर भएको ।

!= jg lbuf] ljsf;sf nflu gofF ;+ /rgfx?sf]
Ifdtf clej[l4 tyf gLlt th{'dfsfs nflu
;xof]u

\$= kl/of]hgf
'zf;g, cg'udg
tyf l;sfO

**;d[l4sf
nflu jg
kl/of]hgf
cjoj**

@= ;d'bfodf
cfwfl/t jgsf]
lbuf] Joj:yfkg /
j[Iff/]fkOf

#= jgdf cfwfl/t pBdx?sf]
;b[l9s/Of tyf ljsf;

Focus Areas

Component I

- Support GoN and other forest sector institutions to address the challenges arising from Nepal's recent federalization process
- Provide capacity-building for government and non-government stakeholders in support of sustainable forest management and forest product utilization.
- Improve the enabling conditions for the establishment and functioning of forest-based enterprises as a source of economic growth and rural employment.
- Component 1 is a prerequisite for the success of both components 2 and 3

Component II

- Invest in bringing more forest under CBFM
- Support sustainable and more productive forest management by CBFM groups to improve forest conditions and delivery of forest products
- Establish plantations and agroforestry by farmers on their private lands either degraded, underutilized or marginal for agriculture and on degraded public lands especially in parts of Terai districts where access to forests and forest products is limited
- Enhance forest productivity in the Chure region by stabilizing soils, reducing surface runoff and increasing in-situ water storage capacity and downstream environmental services, particularly the reduction of risks from flash floods, silt deposition and riverbank erosion.

Focus Areas

Component III

- Support the development of landscape-level harvesting plans (by coordinating forest product harvesting from several small forest areas within a municipality) to ensure sustainable supplies of raw material
- Support for forest-based SMEs establishment and improvement
- Provide technical support & raise awareness for forest-based enterprise
- Support in creating an enabling environment for forest-based enterprises

Component IV

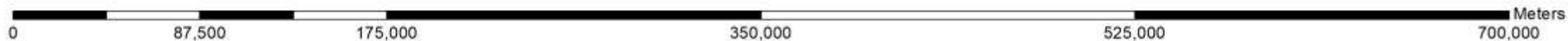
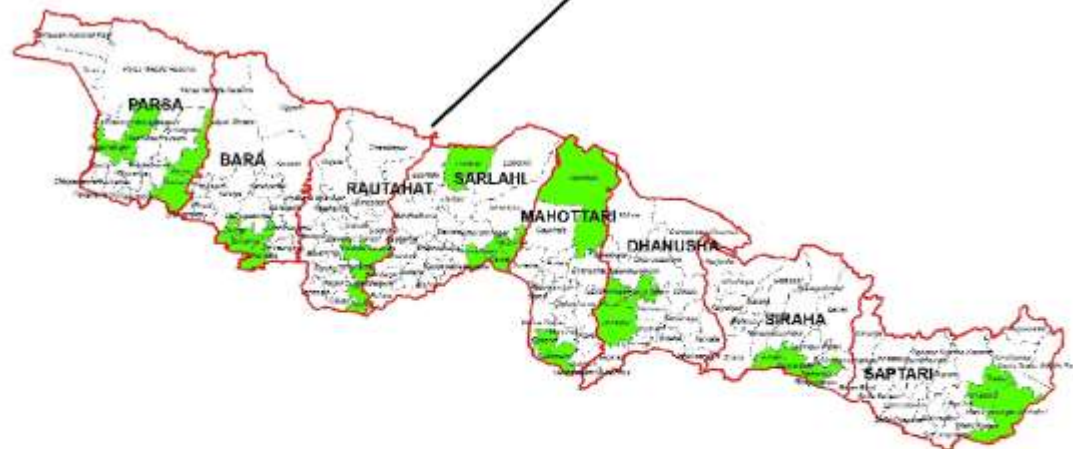
- Mainly for operation of a PMU at federal government level and 2 additional PMUs in provinces
- PMU support and manage project implementation for
 - project governance and oversight
 - annual work planning and budgeting
 - financial management
 - procurement of goods, works and services
 - technical assistance
 - environmental and social risks management and
 - conducting financial, environmental and social monitoring
 - documenting lessons learned from the implementation of project activities

Selected Municipalities for Project Implementation



Province 5

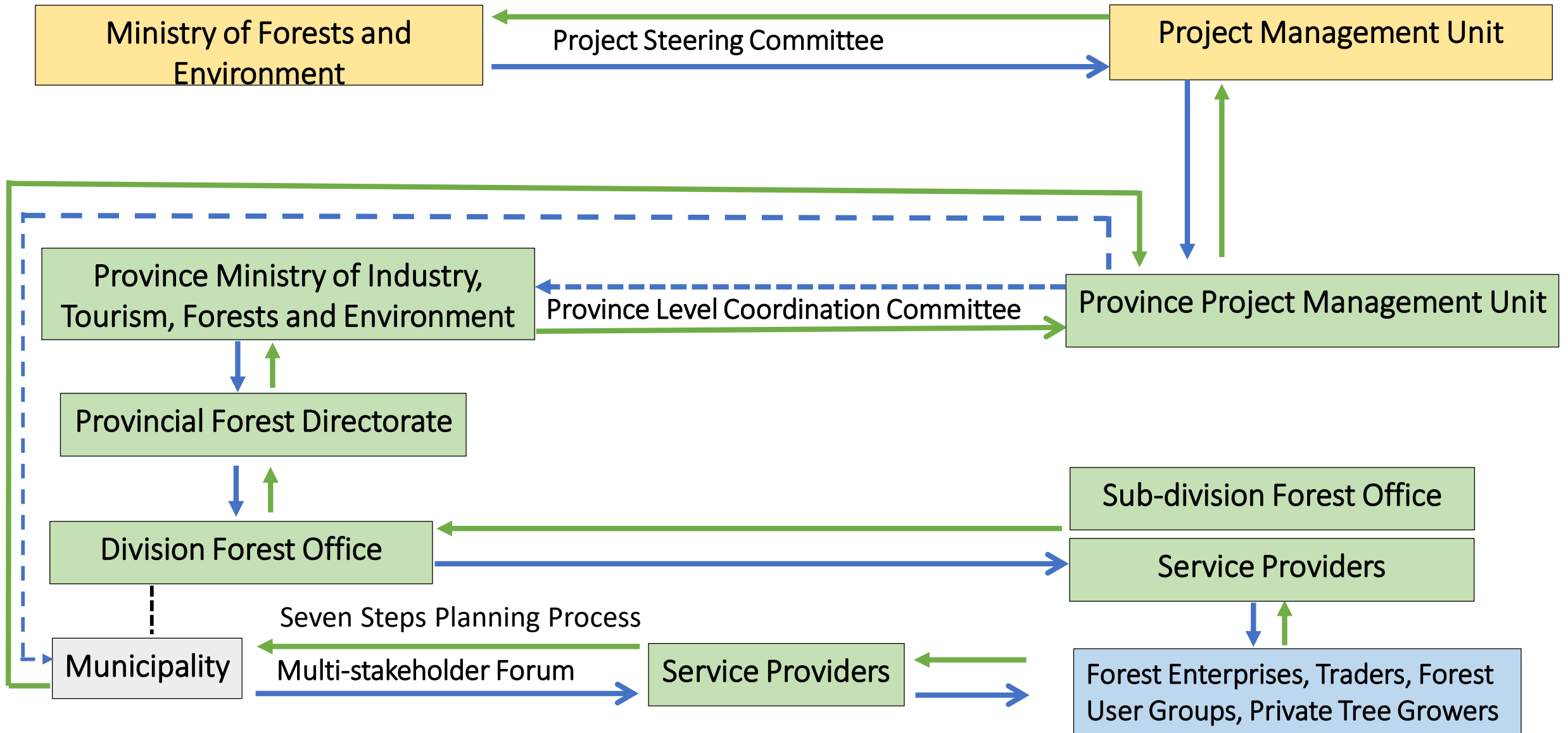
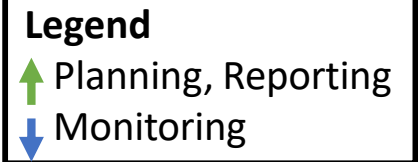
Province 2



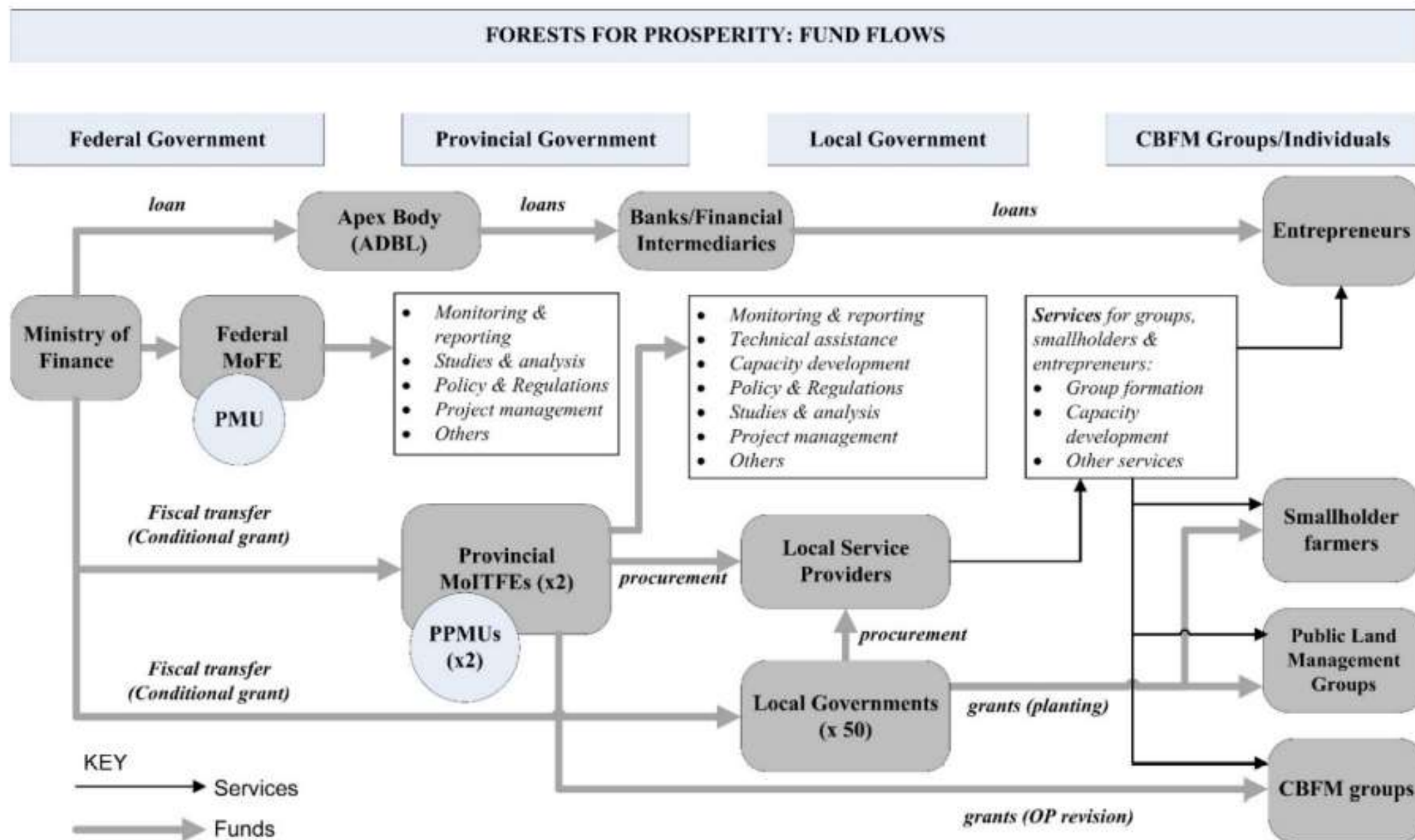
List of the selected Municipalities for Forestry for Prosperity Project (FFPP)

Province 2			Lumbini Province		
District	Municipalities number	Municipalities name	District	Municipalities number	Municipalities name
Sarlahi	4	Parsa R.M., Bramhapur R.M., Haripurwa M., Hariwon M.	Bardiya	2	Bansgadhi M., Badhaiyatal R.M.
			Banke	3	Kohalpur M., Baijanath R. M., Khajura R. M.
Mahottari	3	Jalleshwor M., Bardiwas M., Ekdara R.M.	Dang	4	Ghorahi S.M., Lamahi M.
Siraha		Aurahi R.M., Nawarajpur R.M., Bariyapatthi R.M.	Rolpa	1	Runtigadhi R.M.
			Pyuthan	1	Saruwamai R. M.
Saptari	3	Hanumannagar Kankalini M., Tirhut R.M., Mahadewa R.M.	Arghakhanchi	2	Sitganga M., Panini R. M.
			Palpa	3	Rainadevi Chhahara R.M., Tinau R.M., Baganaskali R.M.
Rautahat	3	Madhavnarayan M., Durga Bhagwati M., Rajdevi M.	Kapilbastu	3	Shivaraj M., Buddhabhumi M., Banaganga M.
Parsa	3	Birgunj Metropolitan City, Jagannathpur M., Paterwa Sugauli R.M.	Rupandehi	4	Sainamaina M., Kanchan R.M., Devdaha M., Lumbini Cultural M.
Bara	3	Pachrauta M., Devtal R.M. Subarna R.M.	Nawalparasi West	2	Sunawal M., Sarawal R.M.
Dhanusha	3	Janakpurdham S.M., Mithila Bihari M. Laxminiya R.M.			

Implementation Arrangement



Fund Flow Mechanism



Project Steering Committee

Chair: Secretary, Ministry of Forests and Environment

Members

- **Federal ministry : [5]**

- Chief, Planning, Monitoring and Coordination Division, MoFE (1)
- DG, Department of Forest and Soil Conservation (1)
- DG, Department of Plant Resource (1)
- Joint Secretary, Ministry of Finance, International Development Assistance Coordination Division (1)
- DG, Department of Industry (1)

- **Province ministry: [2]**

- Secretary, Province No. 2 (1)
- Secretary, Province No. 5 (1)

- **Local government representatives: [2]**

- Chairperson, National Association of Rural Municipalities (1)
- Chairperson, National Association of Municipalities (1)

- **Indigenous people (IP) and local community (LC): [4]**

- IP (2) - Chairperson NEFIN and 1 Women member NEFIN
- LC (2)– Chairperson FECOFUN or ACOFUN (on rotation basis) and 1 Women member FECOFUN or ACOFUN (if Chairperson of FECOFUN participate, women member will be from ACOFUN and vice versa)

- **Private sector: [4]**

- FENFIT (1)- Chairperson FENFIT
- Herbal Association (1)– Chairperson
- Nepal Chamber of Commerce and Industry, Agro-Enterprise Center (1) - Chief
- Participating Bank Chief or Senior Officer (1)

- **Member Secretary: [1]**

- Chief, REDD IC

Total Members = 19

Province Level Coordination Committee

Chair: [1]

Secretary, Ministry of Industry, Tourism, Forests and Environment

Members

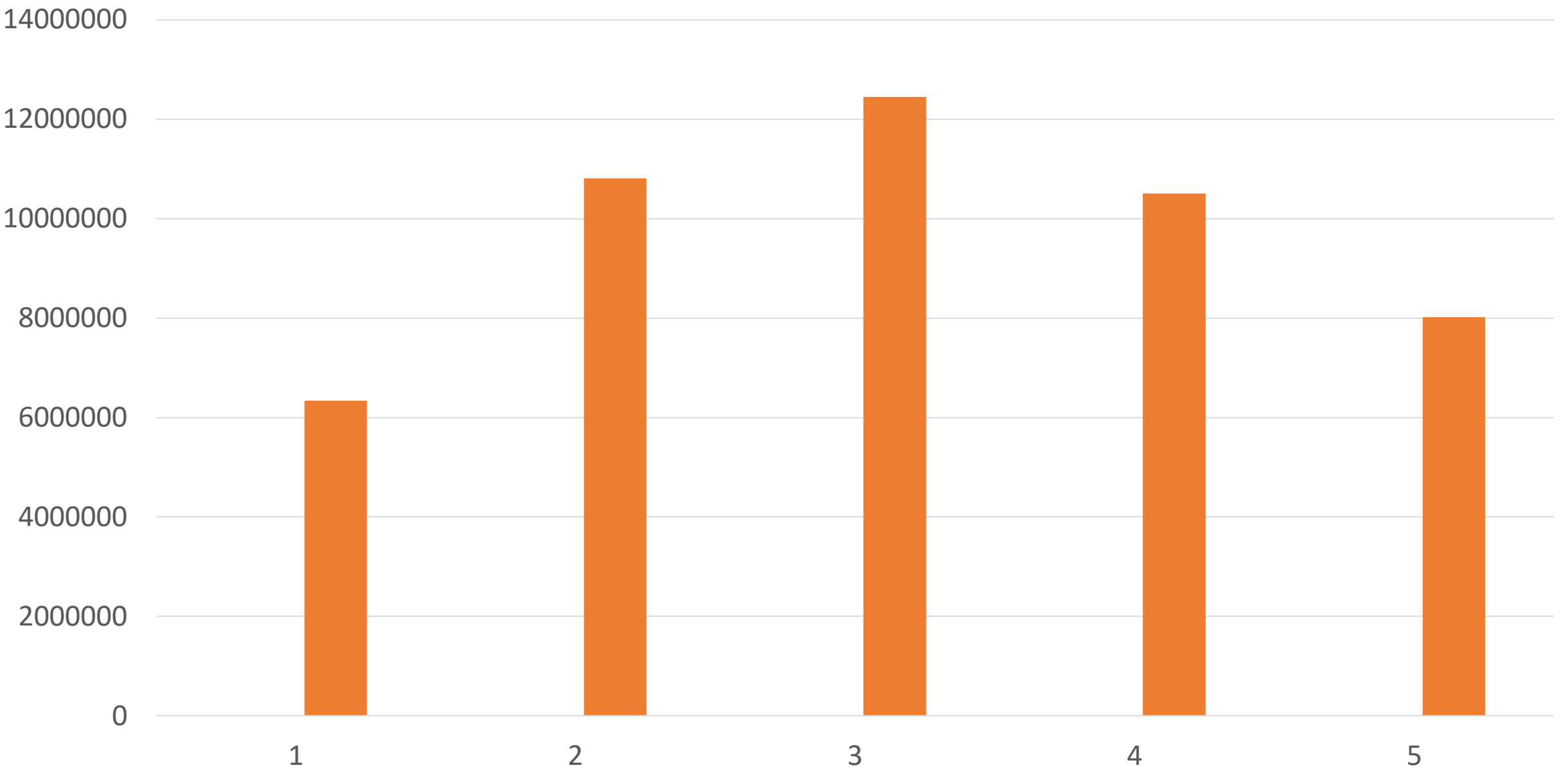
- **Province ministry: [6]**
 - Director, Province Forest Directorate (1)
 - Under secretary, Budget Plan and Program Division, Ministry of Economic Affairs and Planning (1)
 - Under secretary, Social Development Division, Ministry of Social development (1)
 - Under secretary, Industry and Tourism Promotion Division, MoITFE (1)
 - Under secretary, Agriculture Development Division, Ministry of Land Management Agriculture and Cooperative (1)
 - Divisional Forest Officer (2 among DFOs of project divisions on rotation basis) [in special circumstances, more DFOs can be invited with the permission of MoITFE)
- **Local government Representatives: [2]**
 - Chairperson or Representative of Provincial Association of Rural Municipalities [from project area (1)]
 - Chairperson or Representative of Provincial Association of Municipalities [from project area (1)]
- **Indigenous people (IP) and local community (LC): [4]**
 - IP (2) – NEFIN Province Chairperson and one women member
 - LC (2) – FECOFUN or ACOFUN (on rotation) Province Chairperson and one women member (if Chairperson of FECOFUN participate, women member will be from ACOFUN and vice versa)
- **Private sector: [4]**
 - Forest enterprise (2) – Province FENFIT (1) and Herbal Association (1)
 - Provincial Chamber of Commerce and Industry Chair or representative (1)
 - Participating Financial Institution Chief or representative (1)
- **Member Secretary: [1]**
 - Under Secretary, Forest Management and Biodiversity Division, MoITFE (1)

Members = 18

Budget Allocation by Source of Fund

Summary by finance source (US\$)	World Bank		All	Budget by Component (%)
	Grant (M\$)	Loan (M\$)		
Component 1: Policy & capacity building support for new government structures and processes for sustainable forest management	2.9	-	2.9	12
	(100%)	(0%)	(100%)	
Component 2: Community-Based Sustainable Forest Management & Forest Plantations	0.36	10.4	10.76	45
	(3%)	(97%)	(100%)	
Component 3: Forest Enterprise Improvement & Development	0.31	7,03	7.35	31
	(4%)	(96%)	(100%)	
Component 4: Project Governance, Monitoring & Learning	2.52	0.47	2,99	12
	(84%)	(16%)	(100%)	
Total	6.1	17.9	24.00	
	(25%)	(75%)	(100%)	

Project Finance by Year (\$)



Project Major Indicators

Indicators	Unit	Project Target
Rural/Municipality Coverage	Number	50
New CBFM Group Formation	Number	109
CBFM Area hand over	ha	15,898
Revised management plan of CBFM	Number	697
Area covered	ha	93,494
Poor benefiting from land allocation inside CBFM	HH	650
Area of CBFM covered by harvesting plan	ha	2850

Project Major Indicators

Indicator	Unit	Project Target
PLMG formation	Number	275
Plantation/Agroforestry in Public Land (including river bank)	ha	1350
Private plantation establishment	ha	5000
Farmers supported for plantation establishment	HH	16,667
Concessional loan to forest based enterprises (including private nursery)	US\$	6 mill.

Project Implementation Status:

Condition for Fund Disbursement

- Establish the **Project Steering Committees at federal and provincial levels**
- Fill all positions both at the **federal level and provincial level project implementation units**
- **Implement reporting procedures** to ensure appropriate and timely reporting by the Participating Provinces and Selected Municipalities to the Federal Government on the use of the proceeds of the Financing for their intended purposes.
- **Project Operational Manual** has been prepared, approved, and adopted by the Borrower in a manner and substance satisfactory to the World Bank.
- **CBFM Grant Manual** has been prepared, approved, and adopted by the Borrower, in a manner and substance satisfactory to the World Bank.
- **Plantation Grant Operational Manual** has been prepared, approved, and adopted by the Borrower, in a manner and substance satisfactory to the World Bank.

Project Staffs (at Federal PMU)

SN	Staff position	Staff type	Duration
1	National Project Coordinator - 1	Government	Project period (60 Months)
2	Account Officer - 1	Government	Project period (60 Months)
3	Financial Management specialist - 1	Consultant	Part time (30 Months)
4	Procurement Specialist - 1	Consultant	Part time (30 Months)
5	Technical Specialist (Forests and Safeguard)	Consultant	Project period (60 Months)
6	M & E Specialist	Consultant	Project period (60 Months)
7	Receptionist/Office Assistant/Driver - 3	Support Staff	Project period (60 Months)

Project Staffing Province level

SN	Staff position	Staff type	Duration
1	Province Project Coordinator - 1	Province Government	Project period (60 Months)
2	Account Officer – 1		
3	Accountant – 1		
4	Financial Management specialist - 1	Consultant	Part time (30 Months)
5	Procurement Specialist - 1	Consultant	Part time (30 Months)
6	Technical Specialist (Forestry & Enterprises)	Consultant	Project period (60 Months)
7	Safeguard Specialist	Consultant	Part time (30 Months)
8	M & E Specialist	Consultant	Project period (60 Months)
9	Receptionist/Office Assistant/ Driver - 3	Support Staff	Project period (60 Months)

Thank You